



**Link Transit System
Public Transit Advisory Commission (PTAC)
Tuesday, September 9, 2025 @ 5:00 P.M.**

Meeting to be Held in Person or Virtually on Zoom Platform

425 S. Lexington Ave, Burlington, NC 27215 @ Municipal Conference Room (Lower Level)

OR <https://us02web.zoom.us/j/89715927376> OR 1 (346) 248-7799

Meeting ID: 897 1592 7376

AGENDA

- 1) Call to Order & Quorum Chairman**
 - Changes to Agenda / Add On Items
 - Speakers from the Floor – three (3) minutes per speaker
- 2) Approval of the April 2025 Meeting Minutes John Andoh**
- 3) Election of Chair and Vice Chair John Andoh**
- 4) Introduction of New PTAC Members John Andoh**
- 5) Conflict of Interest Statement for NCDOT John Andoh**
- 6) Link Transit System Update John Andoh**
 - Update on Transit System Activities
 - Transit Operations Report
- 8) Link Transit Operations Report John Andoh**
 - Fixed Route & Paratransit Ridership Update Through June 2025
- 9) Other Business Chairman**
 - Other Items of Interest and Upcoming Events
 - Reports & Questions from PTAC Members
 - Agenda Topics for Next Meeting

Next Meeting Scheduled for: Tuesday, November 11, 2025.

**ACCESS TO INFORMATION: ALL DOCUMENTS AND DATA CAN BE PROVIDED IN
ALTERNATIVE FORMAT UPON REQUEST**

It is the policy of the Link Transit System to ensure that no person shall, on the ground of race, color, sex, age, national origin, or disability, be excluded from participation in, be denied the benefits of, or be otherwise subjected to discrimination under any program or activity as provided by Title VI of the Civil Rights Act of 1964, the Civil Rights Restoration Act of 1987, and any other related non-discrimination Civil Rights laws and authorities.

MINUTES

LINK TRANSIT PUBLIC TRANSIT ADVISORY COMMISSION

Tuesday, April 8, 2025

5:00 P.M.

Meeting held via Zoom and at 425 S. Lexington Avenue, Burlington, NC 27215 in the
Municipal Conference Room (Lower Level)

MEMBERS PRESENT

Steve Carter, Alamance County
Moses Corbett, Burlington (Secretary)
Ralph Harwood, Elon (Chair)
Sean Ewing, Mebane
Irene Fanelli, Gibsonville
Bonita Brown, Burlington (Vice Chair)
Montrena Hadley, Mebane Alternate
Roger Meisenbach, Burlington

OTHERS PRESENT

John Andoh, Transit Manager
Mary Kate Morookian, Kimley-Horn
Jacob Campbell, Transdev
Peter Murphy, ACTA

MEMBERS ABSENT

Melissa McBane, Elon Alternate
Blake Slaughter, Burlington Alternate
Chief Armstrong, ACC
Brian Doward, ACC Alternate
Austin Dorval, Burlington

Call to Order

Chair Harwood called the meeting to order at 5:02 PM and welcomed all members and guests.

Chair Harwood solicited public comments from the floor and requested comments to be limited to three (3) minutes per speaker. No public comments. The meeting agenda was reviewed. No changes were made to the agenda.

Approval of the January 2025 Meeting Minutes

The January 2025 meeting minutes were reviewed. Mr. Meisenbach made a motion to approve the meeting minutes. Mr. Meisenbach seconded the motion. All PTAC members voted in approval of the January 2025 meeting minutes.

Link Transit System Update

Ms. Morookian of Kimley-Horn did an update about the Transit Development Plan and Transit Facility Study. The Commissioners asked questions about the routes, the facility, the funding and the timeline. Ms. Morookian and Mr. Andoh answered questions.

Mr. Andoh provided the following updates and explanations regarding Link Transit on the topics below:

- Passenger Amenities Update – new bus shelters being installed at Tucker as well as Seller Mill on both sides of the street.
- Schedule Adjustments and Route Modifications – Transdev completed its test and the schedule adjustments will occur in the summer time.
- Purple Route 5 to Haw River and Green Level – Link Transit has provided a proposal to Haw River and Green Level transit services and intended funding.
- Transit System Request For Proposals – The City Council awarded a contract to WeDriveU, which operates the PART system. It is envisioned that services will begin on July 1, 2025.
- Draft FY 2026 Operating and Capital Budget – Expenses and revenues are up, particularly in the costs being paid to MTM.
- Program of Projects – FFY 2026 – This is based on the grants that the City is applying for.
- Upcoming Link Transit Plans – This relates to the implementation of the transit development plan route recommendation in FY 2026.
- Update on Transit Operations from Transdev – Jacob Campbell gave an update and thanked the commission for allowing his company to serve.

The Commissioners had a discussion about the topics presented above and asked questions. Mr. Andoh provided responses to the questions.

Link Transit Operations Report

Mr. Andoh presented the ridership update through March 2025 and discussed the performance of each route.

Other Business

There was none.

Adjournment

Chair Harwood asked for a motion for adjournment. Secretary Corbett made a motion to adjourn the meeting and Mr. Ewing seconded the motion. All PTAC members voted in approval. Chairman Harwood adjourned the PTAC meeting at 6:00 P.M.

CONFLICT OF INTEREST STATEMENT

City of Burlington – Link Transit

Tentative: September 9, 2025

In accordance with Board policy and related legislation, no employee, officer, agent, immediate family member, or Board member of the agency shall participate in the selection, award, or administration of a contract supported by Federal and/or State funds if a conflict of interest, real or apparent, would be involved. Such a conflict would arise when any of the following has a financial or other interest in the firm selected for award:

- The employee, officer, agent, or Board member,
- Any member of his/her immediate family,
- His or her partner, or
- An organization that employs, or is about to employ, any of the above.

The agency's officers, employees, agents, or Board members will neither solicit nor accept gifts, gratuities, favors, or anything of monetary value from contractors, potential contractors, or parties to sub-agreements.

To the extent permitted by state or local law or regulations, such standards of conduct will provide for penalties, sanctions, or other disciplinary action for violation of such standards by the grantee's officers, employees, or agents, or by contractors or their agents.

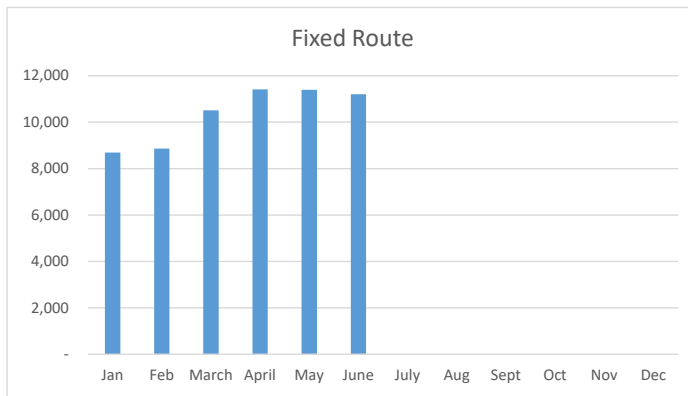
The undersigned hereby acknowledges, understands, and agrees to abide by this policy.

(Printed Name)

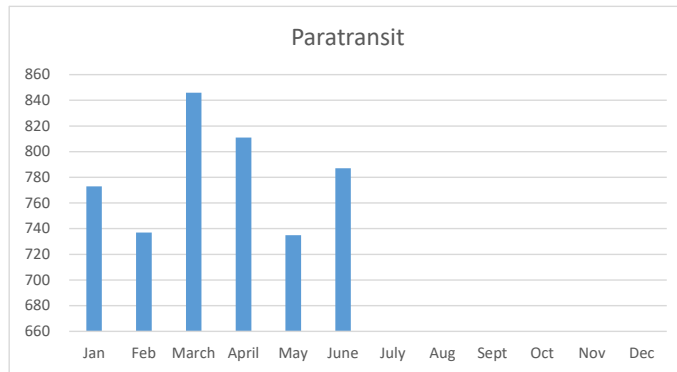
(Signature)

(Date)

FR 2025	TOTAL
Jan	8,691
Feb	8,864
March	10,513
April	11,411
May	11,391
June	11,207
July	
Aug	
Sept	
Oct	
Nov	
Dec	
TOTAL	62,077



PARA 2025	TOTAL
Jan	773
Feb	737
March	846
April	811
May	735
June	787
July	
Aug	
Sept	
Oct	
Nov	
Dec	
TOTAL	4,689

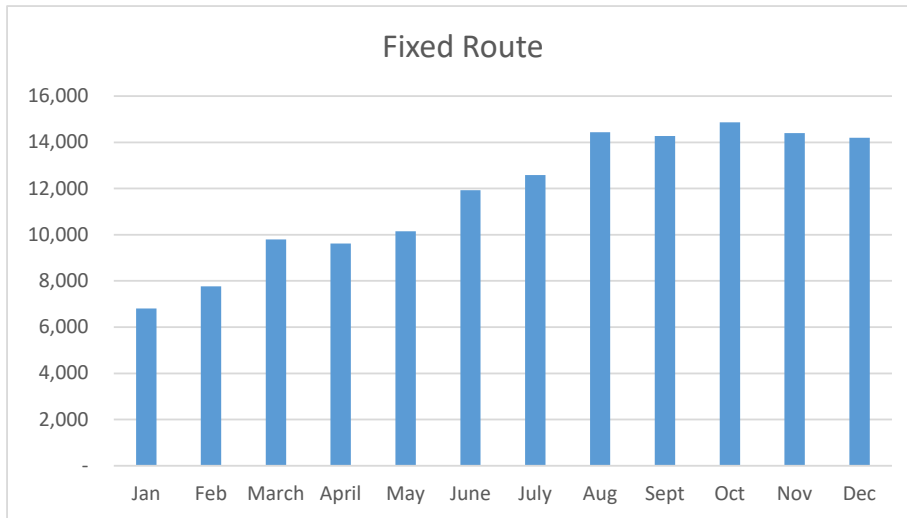


FY 16	9,377	LINK TRANSIT FIXED ROUTE	2016	2017	2018	2019	2020	2021	2022	2023	2024	2025
FY 17	79,498	January		6,643	5,992	8,285	7,027	4,243	6,807	14,896	10,616	8,691
FY 18	85,703	February		6,410	7,067	8,011	6,609	3,449	7,761	13,499	10,177	8,864
FY 19	104,551	March		6,528	6,343	7,809	6,315	4,605	9,792	13,641	10,400	10,513
FY 20	88,052	April		6,065	6,440	10,223	3,273	3,880	9,615	12,268	11,080	11,411
FY 21	50,093	May		6,734	7,105	12,476	5,150	4,669	10,153	13,334	11,208	11,391
FY 22	125,437	June	9,377	8,461	7,790	9,964	3,967	3,818	11,924	12,450	10,420	11,207
FY 23	164,846	July	5,145	6,833	7,869	9,484	3,958	4,660	12,587	12,290	11,206	
FY 24	148,600	August	7,779	7,746	8,122	10,831	3,957	7,394	14,439	13,943	11,329	
FY 25	125,920	September	5,961	7,854	7,352	7,678	5,033	7,294	14,269	13,651	10,817	
		October	6,743	8,107	9,809	10,178	4,071	8,983	14,868	16,283	10,354	
		November	6,479	7,661	8,523	8,891	4,021	8,563	14,394	15,579	11,008	
		December	6,550	6,765	6,108	8,649	4,389	8,455	14,201	12,953	9,129	
		TOTAL	48,034	85,807	88,520	112,479	57,770	70,013	140,810	164,787	127,744	62,077

FY 16	66	LINK PARATRANSIT	2016	2017	2018	2019	2020	2021	2022	2023	2024	2025
FY 17	2,403	January		200	285	485	498	368	400	596	550	773
FY 18	4,366	February		185	393	382	521	384	459	431	808	737
FY 19	4,649	March		246	414	425	439	492	528	692	835	846
FY 20	4,443	April		209	385	423	239	453	471	578	794	811
FY 21	4,741	May		235	464	438	237	414	534	619	775	735
FY 22	5,935	June	66	228	428	394	329	505	547	606	647	787
FY 23	7,077	July	110	255	379	422	277	440	460	584	713	
FY 24	8,782	August	147	281	432	461	328	467	501	853	828	
FY 25	9,452	September	183	410	381	440	480	497	625	746	723	
		October	204	483	497	546	461	498	593	745	890	
		November	229	407	519	496	366	513	640	747	883	
		December	172	322	336	458	418	450	612	698	726	
		TOTAL	1,111	3,461	4,913	5,370	4,593	5,481	6,370	7,895	9,172	4,689

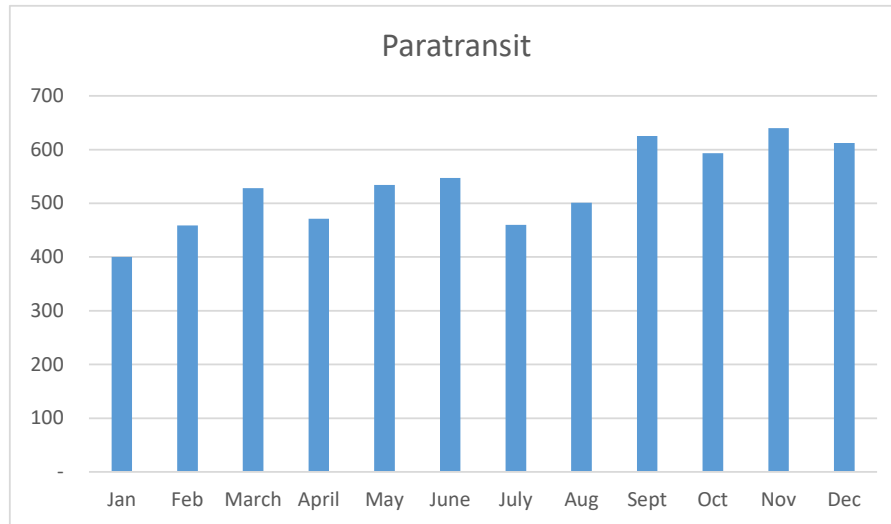
Systemwide												
Total	49,145	89,268	93,433	117,849	62,363	75,494	147,180	172,682	136,916	66,766		

FR 2022	TOTAL
Jan	6,807
Feb	7,761
March	9,792
April	9,615
May	10,153
June	11,924
July	12,587
Aug	14,439
Sept	14,269
Oct	14,865
Nov	14,394
Dec	14,201
TOTAL	140,807



*April is estimated from UTA APCs

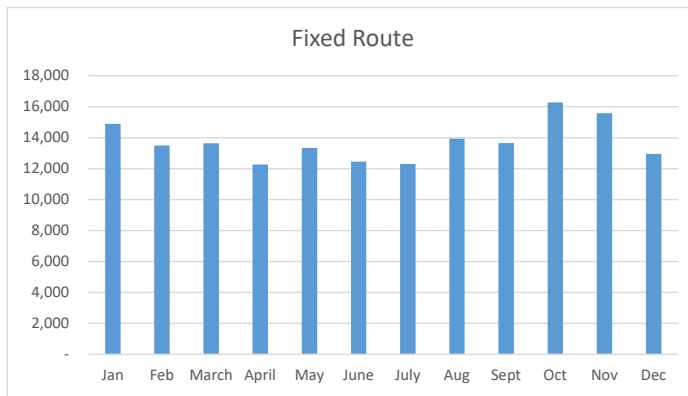
PARA 2022	TOTAL
Jan	400
Feb	459
March	528
April	471
May	534
June	547
July	460
Aug	501
Sept	625
Oct	593
Nov	640
Dec	612
TOTAL	6,370



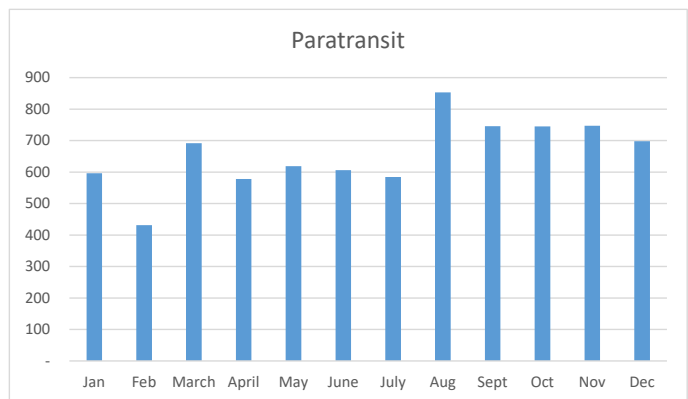
FY 16	9,377	LINK TRANSIT FIXED ROUTE	2016	2017	2018	2019	2020	2021	2022
FY 17	79,498	January		6,643	5,992	8,285	7,027	4,243	6,807
FY 18	85,703	February		6,410	7,067	8,011	6,609	3,449	7,761
FY 19	104,551	March		6,528	6,343	7,809	6,315	4,605	9,792
FY 20	88,052	April		6,065	6,440	10,223	3,273	3,880	9,615
FY 21	50,093	May		6,734	7,105	12,476	5,150	4,669	10,153
FY 22	101,401	June	9,377	8,461	7,790	9,964	3,967	3,818	11,924
FY 23	84,755	July	5,145	6,833	7,869	9,484	3,958	4,660	12,587
		August	7,779	7,746	8,122	10,831	3,957	7,394	14,439
		September	5,961	7,854	7,352	7,678	5,033	7,294	14,269
		October	6,743	8,107	9,809	10,178	4,071	8,983	14,865
		November	6,479	7,661	8,523	8,891	4,021	8,563	14,394
		December	6,550	6,765	6,108	8,649	4,389	8,455	14,201
		TOTAL	48,034	85,807	88,520	112,479	57,770	70,013	140,807

FY 16	66	LINK PARATRANSIT	2016	2017	2018	2019	2020	2021	2022
FY 17	1,303	January		200	285	485	498	368	400
FY 18	4,527	February		185	393	382	521	384	459
FY 19	5,091	March		246	414	425	439	492	528
FY 20	5,086	April		209	385	423	239	453	471
FY 21	4,946	May		235	464	438	237	414	534
FY 22	5,804	June	66	228	428	394	329	505	547
FY 23	3,431	July	110	255	379	422	277	440	460
		August	147	281	432	461	328	467	501
		September	183	410	381	440	480	497	625
		October	204	483	497	546	461	498	593
		November	229	407	519	496	366	513	640
		December	172	322	336	458	418	450	612
		TOTAL	1,111	3,461	4,913	5,370	4,593	5,481	6,370

FR 2023	TOTAL
Jan	14,896
Feb	13,499
March	13,641
April	12,268
May	13,334
June	12,450
July	12,290
Aug	13,943
Sept	13,651
Oct	16,283
Nov	15,579
Dec	12,953
TOTAL	164,787



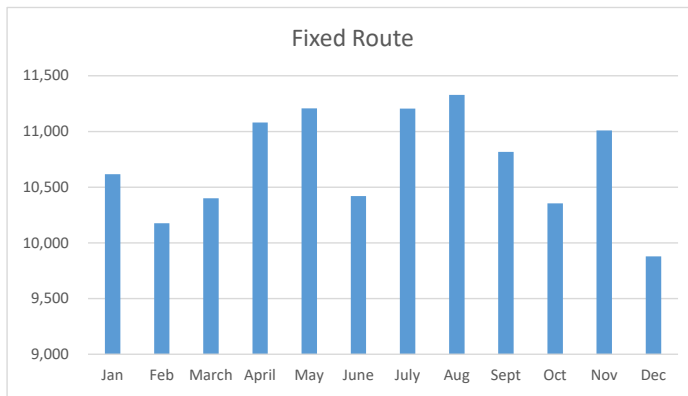
PARA 2023	TOTAL
Jan	596
Feb	431
March	692
April	578
May	619
June	606
July	584
Aug	853
Sept	746
Oct	745
Nov	747
Dec	698
TOTAL	7,895



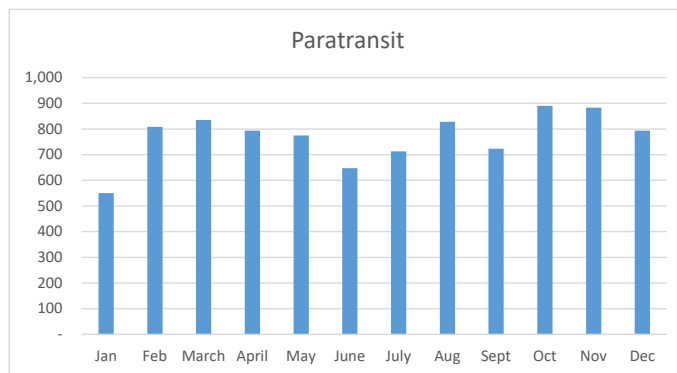
FY 16		LINK TRANSIT FIXED ROUTE	2016	2017	2018	2019	2020	2021	2022	2023
FY 17	9,377	January		6,643	5,992	8,285	7,027	4,243	6,807	14,896
FY 18	79,498	February		6,410	7,067	8,011	6,609	3,449	7,761	13,499
FY 19	85,703	March		6,528	6,343	7,809	6,315	4,605	9,792	13,641
FY 20	104,551	April		6,065	6,440	10,223	3,273	3,880	9,615	12,268
FY 21	88,052	May		6,734	7,105	12,476	5,150	4,669	10,153	13,334
FY 22	50,093	June	9,377	8,461	7,790	9,964	3,967	3,818	11,924	12,450
FY 23	125,437	July	5,145	6,833	7,869	9,484	3,958	4,660	12,587	12,290
FY 24	164,846	August	7,779	7,746	8,122	10,831	3,957	7,394	14,439	13,943
	84,699	September	5,961	7,854	7,352	7,678	5,033	7,294	14,269	13,651
		October	6,743	8,107	9,809	10,178	4,071	8,983	14,868	16,283
		November	6,479	7,661	8,523	8,891	4,021	8,563	14,394	15,579
		December	6,550	6,765	6,108	8,649	4,389	8,455	14,201	12,953
		TOTAL	48,034	85,807	88,520	112,479	57,770	70,013	140,810	164,787

FY 16		LINK PARATRANSIT	2016	2017	2018	2019	2020	2021	2022	2023
FY 17	66	January		200	285	485	498	368	400	596
FY 18	2,403	February		185	393	382	521	384	459	431
FY 19	4,366	March		246	414	425	439	492	528	692
FY 20	4,649	April		209	385	423	239	453	471	578
FY 21	4,443	May		235	464	438	237	414	534	619
FY 22	4,741	June	66	228	428	394	329	505	547	606
FY 23	5,935	July	110	255	379	422	277	440	460	584
FY 24	7,077	August	147	281	432	461	328	467	501	853
	4,373	September	183	410	381	440	480	497	625	746
		October	204	483	497	546	461	498	593	745
		November	229	407	519	496	366	513	640	747
		December	172	322	336	458	418	450	612	698
		TOTAL	1,111	3,461	4,913	5,370	4,593	5,481	6,370	7,895

FR 2024	TOTAL
Jan	10,616
Feb	10,177
March	10,400
April	11,080
May	11,208
June	10,420
July	11,206
Aug	11,329
Sept	10,817
Oct	10,354
Nov	11,008
Dec	9,878
TOTAL	128,493



PARA 2024	TOTAL
Jan	550
Feb	808
March	835
April	794
May	775
June	647
July	713
Aug	828
Sept	723
Oct	890
Nov	883
Dec	794
TOTAL	9,240



FY 16	9,377	LINK TRANSIT FIXED ROUTE	2016	2017	2018	2019	2020	2021	2022	2023	2024
FY 17	79,498	January		6,643	5,992	8,285	7,027	4,243	6,807	14,896	10,616
FY 18	85,703	February		6,410	7,067	8,011	6,609	3,449	7,761	13,499	10,177
FY 19	104,551	March		6,528	6,343	7,809	6,315	4,605	9,792	13,641	10,400
FY 20	88,052	April		6,065	6,440	10,223	3,273	3,880	9,615	12,268	11,080
FY 21	50,093	May		6,734	7,105	12,476	5,150	4,669	10,153	13,334	11,208
FY 22	125,437	June	9,377	8,461	7,790	9,964	3,967	3,818	11,924	12,450	10,420
FY 23	164,846	July	5,145	6,833	7,869	9,484	3,958	4,660	12,587	12,290	11,206
FY 24	148,600	August	7,779	7,746	8,122	10,831	3,957	7,394	14,439	13,943	11,329
FY 25	43,706	September	5,961	7,854	7,352	7,678	5,033	7,294	14,269	13,651	10,817
		October	6,743	8,107	9,809	10,178	4,071	8,983	14,868	16,283	10,354
		November	6,479	7,661	8,523	8,891	4,021	8,563	14,394	15,579	11,008
		December	6,550	6,765	6,108	8,649	4,389	8,455	14,201	12,953	9,129
		TOTAL	48,034	85,807	88,520	112,479	57,770	70,013	140,810	164,787	127,744

FY 16	66	LINK PARATRANSIT	2016	2017	2018	2019	2020	2021	2022	2023	2024
FY 17	2,403	January		200	285	485	498	368	400	596	550
FY 18	4,366	February		185	393	382	521	384	459	431	808
FY 19	4,649	March		246	414	425	439	492	528	692	835
FY 20	4,443	April		209	385	423	239	453	471	578	794
FY 21	4,741	May		235	464	438	237	414	534	619	775
FY 22	5,935	June	66	228	428	394	329	505	547	606	647
FY 23	7,077	July	110	255	379	422	277	440	460	584	713
FY 24	8,782	August	147	281	432	461	328	467	501	853	828
FY 25	4,763	September	183	410	381	440	480	497	625	746	723
		October	204	483	497	546	461	498	593	745	890
		November	229	407	519	496	366	513	640	747	883
		December	172	322	336	458	418	450	612	698	726
		TOTAL	1,111	3,461	4,913	5,370	4,593	5,481	6,370	7,895	9,172

Systemwide											
Total	49,145	89,268	93,433	117,849	62,363	75,494	147,180	172,682	136,916		

Systemwid

2016	49145	0
2017	89268	
2018	93433	
2019	117849	
2020	62363	
2021	75494	
2022	147180	
2023	172682	
	807414	